

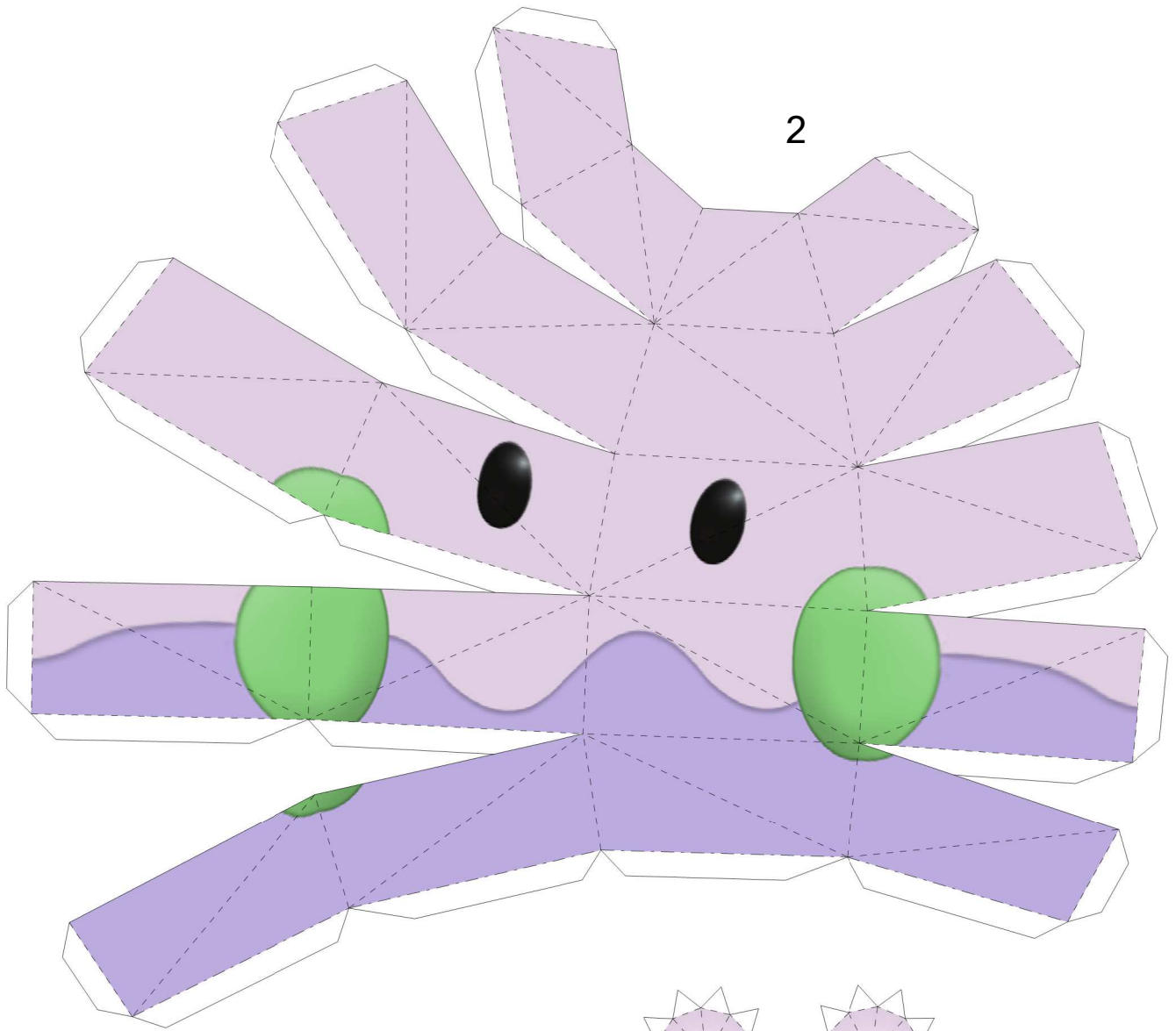


Goomy

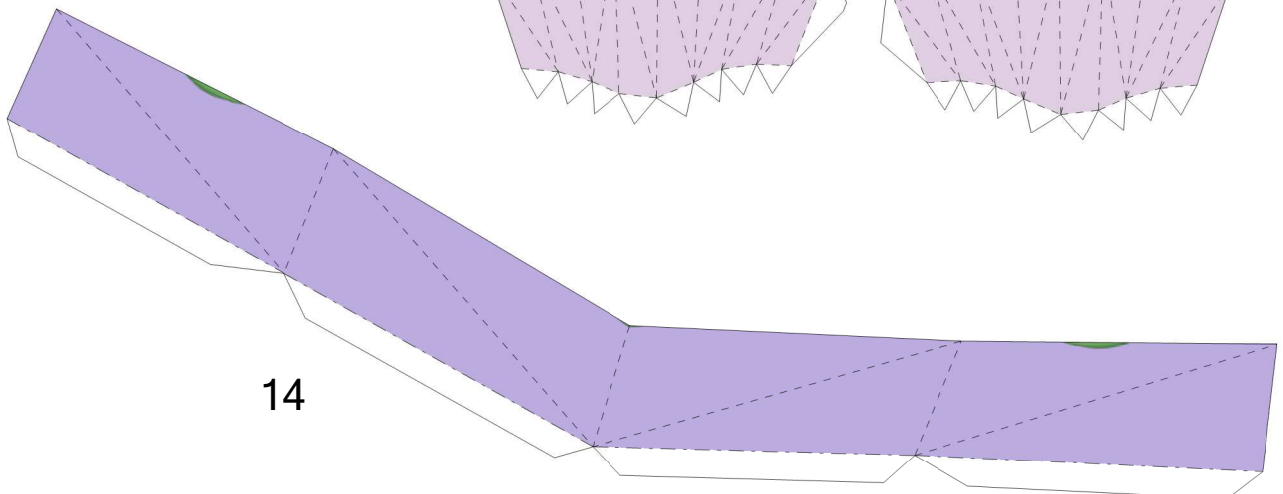
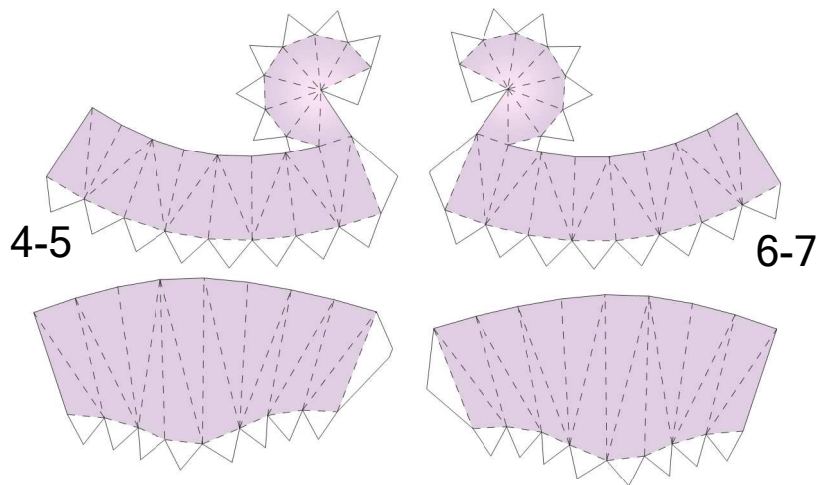
By Brandon

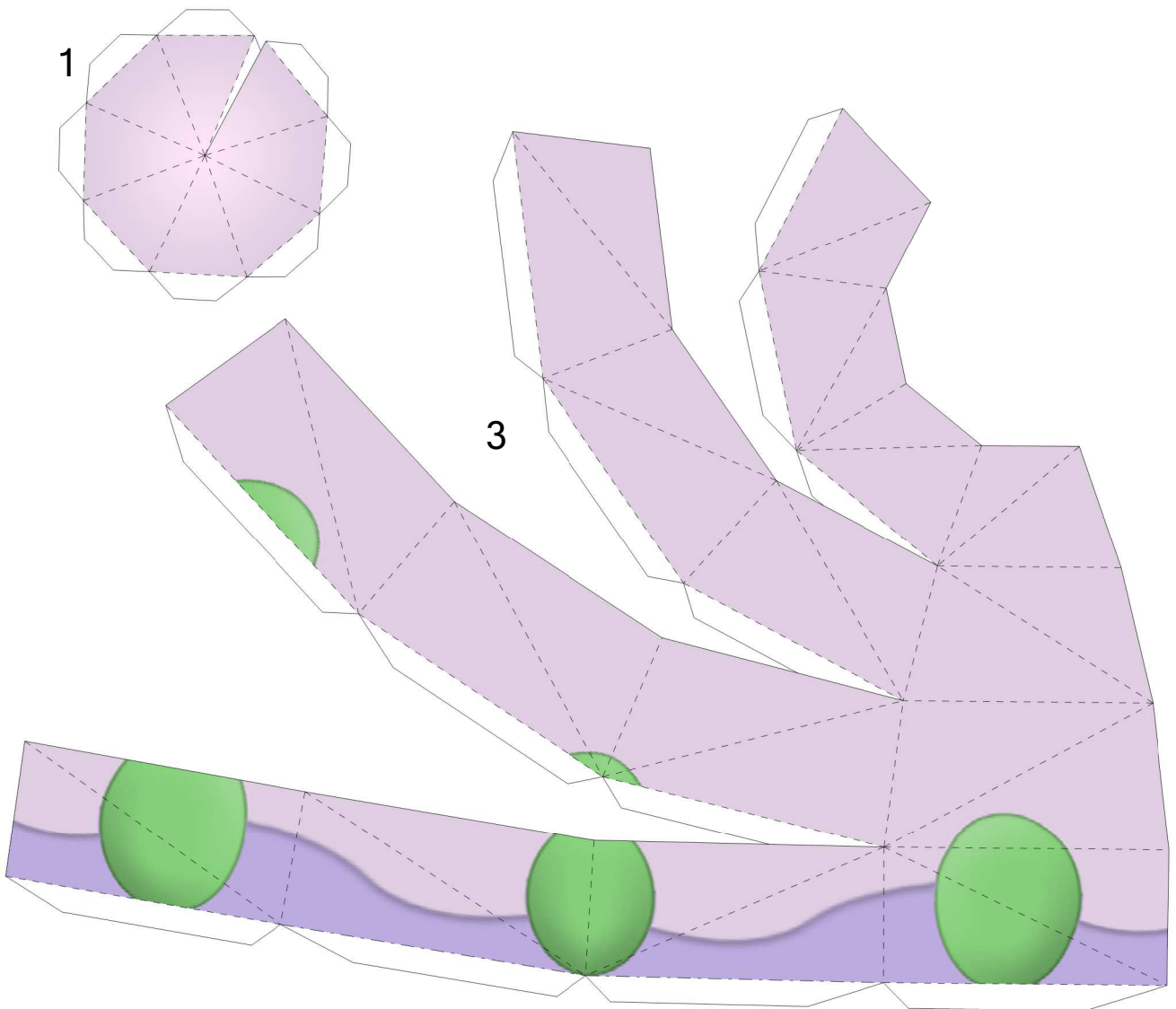
Build by LuS

Paper Pokés
www.pokemonpapercraft.net



Start at the top of the head and glue the front and back to it, starting by the front part. Glue the antennae to the body before closing.





1

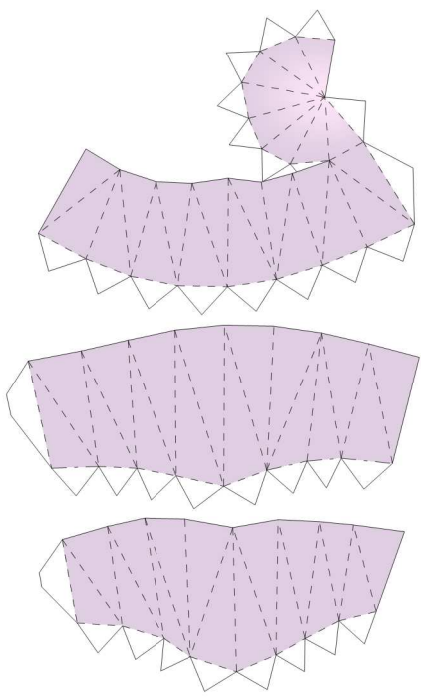
3

Start the antennae at the top and work to the bottom. Glue the front ones before.

8

9

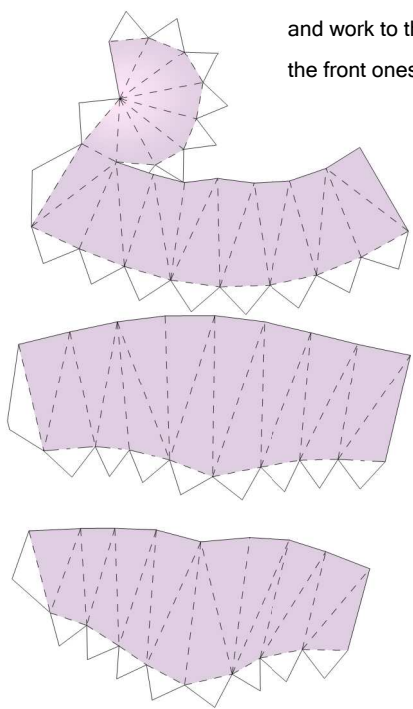
10



11

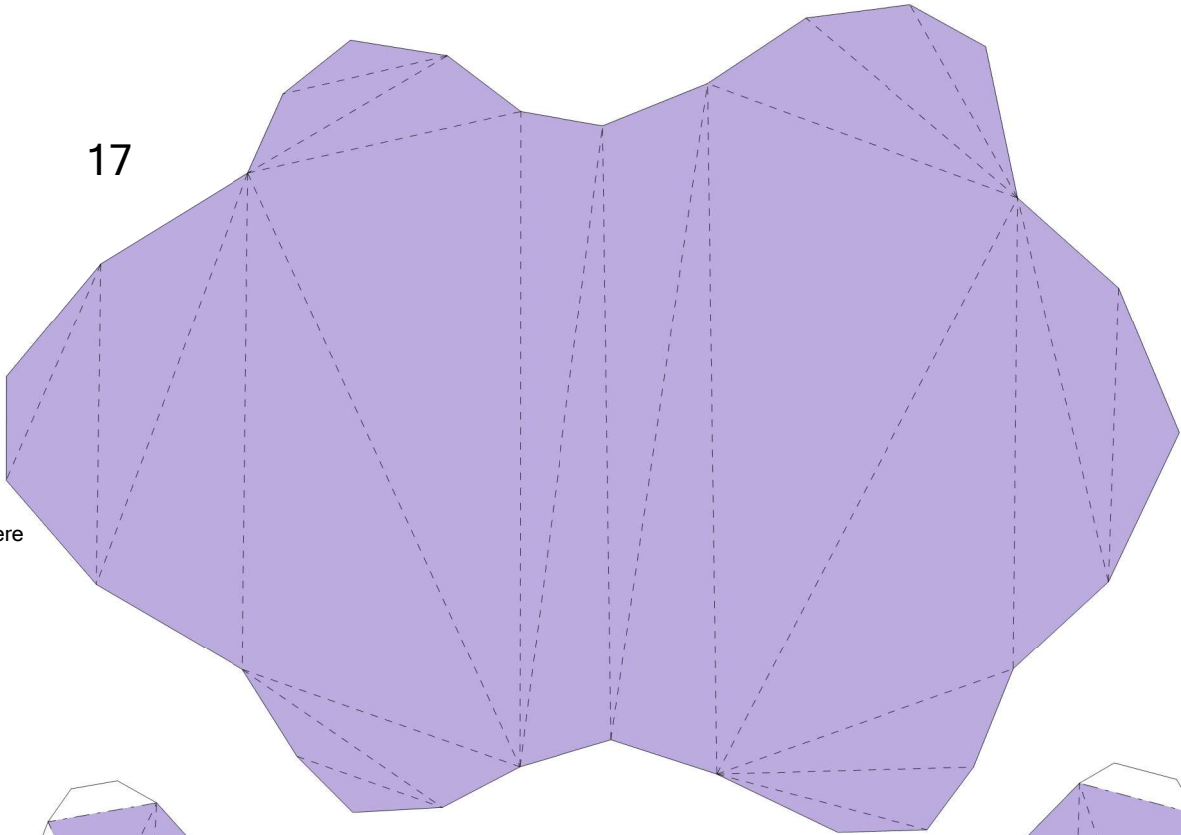
12

13

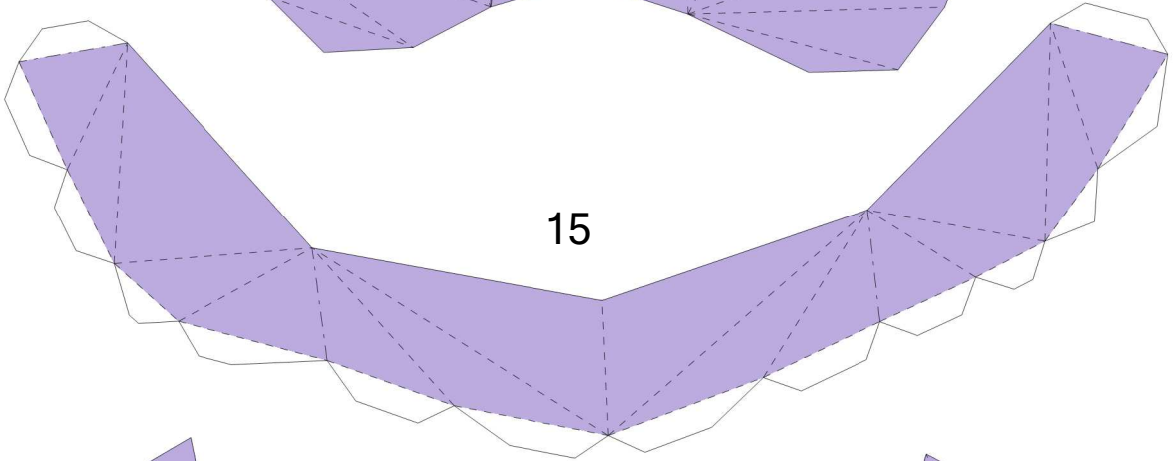


17

Close here
^



15



16

